



2021 / Agrify Guide

A Guide to Choosing Cannabis Cultivation Software

sales@agrify.com
www.agrify.com
(617) 896-5243

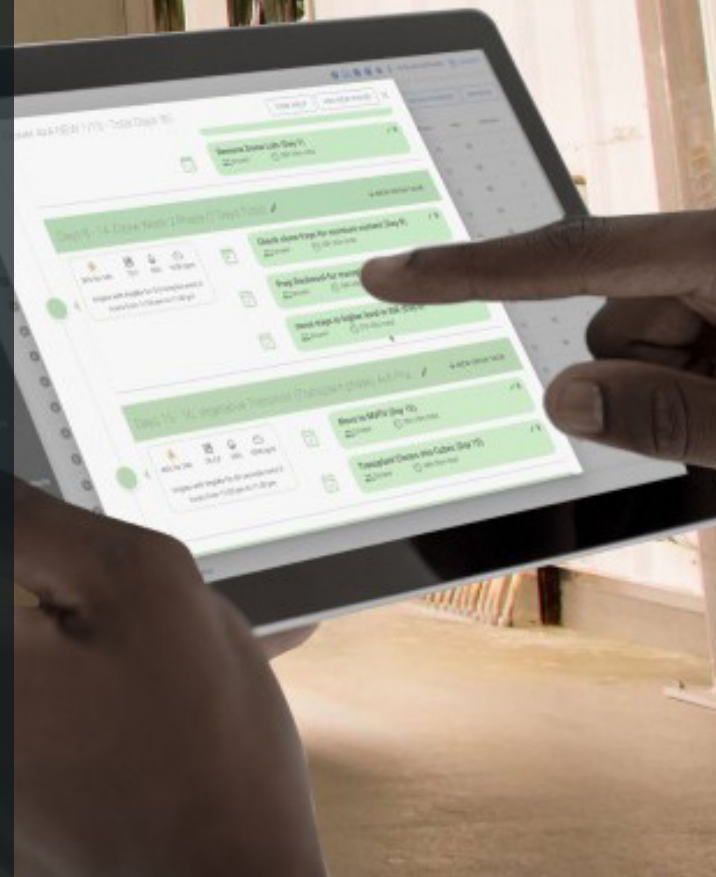




Welcome

Choosing the best tools to automate and optimize your entire seed-to-sale workflow is never easy.

Whether it's a lack of features, problems with hardware and software compatibility, limitations on customizability or lack of support, selecting the wrong application or vendor inevitably results in added direct costs and mounting frustration with eroding profit margins. This article explores common software selection pitfalls and explains features that growers should consider prioritizing when choosing a solution.



Common Cultivation Software Pitfalls

SILOED DATA

A cannabis grow room is a complex system of moving parts. Integrating software should be helpful, but at times these solutions end up segmenting data to a degree that prevents those moving parts from communicating with each other effectively.

INADEQUATE ACCESS CONTROL

Access control is an integral part of every organization's IT environment. When adding a new user into a management system, access control frameworks set specific permissions and eliminate the risk of breaching information or giving access to managing areas outside of that role's jurisdiction

LIMITED HARDWARE INTEGRATION

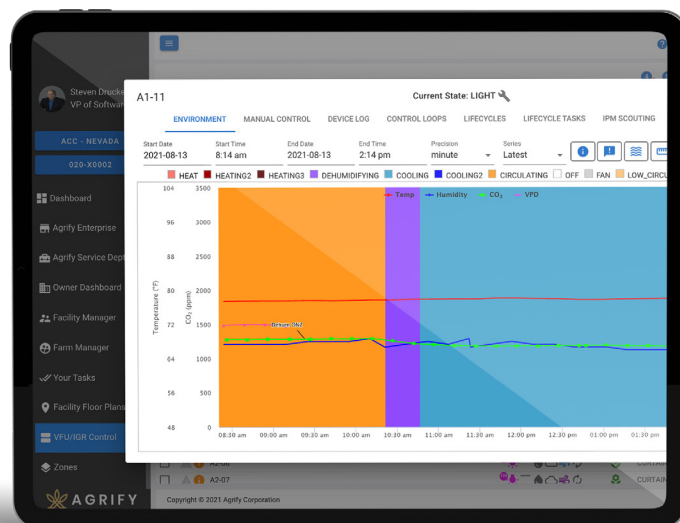
Despite the growing number of cultivation software solutions available, integration with hardware remains challenging. Often growers and operators are not able to use valuable features due to limited or clunky integration.

LIMITED DATA COLLECTION CAPABILITIES

Cultivation software often falls short when it comes to automating, aggregating, and correlating data input from multiple independent sources. Manual input is particularly problematic due to associated labor costs, the high possibility of users making data-entry mistakes, or even fraudulently manipulating data to reach a specified target.

INABILITY TO SCALE

Outdated technology, software hosted on-premises, and inflexible products that require substantial installation and configuration time can hinder scaling by limiting a business' ability to remain agile and expand.

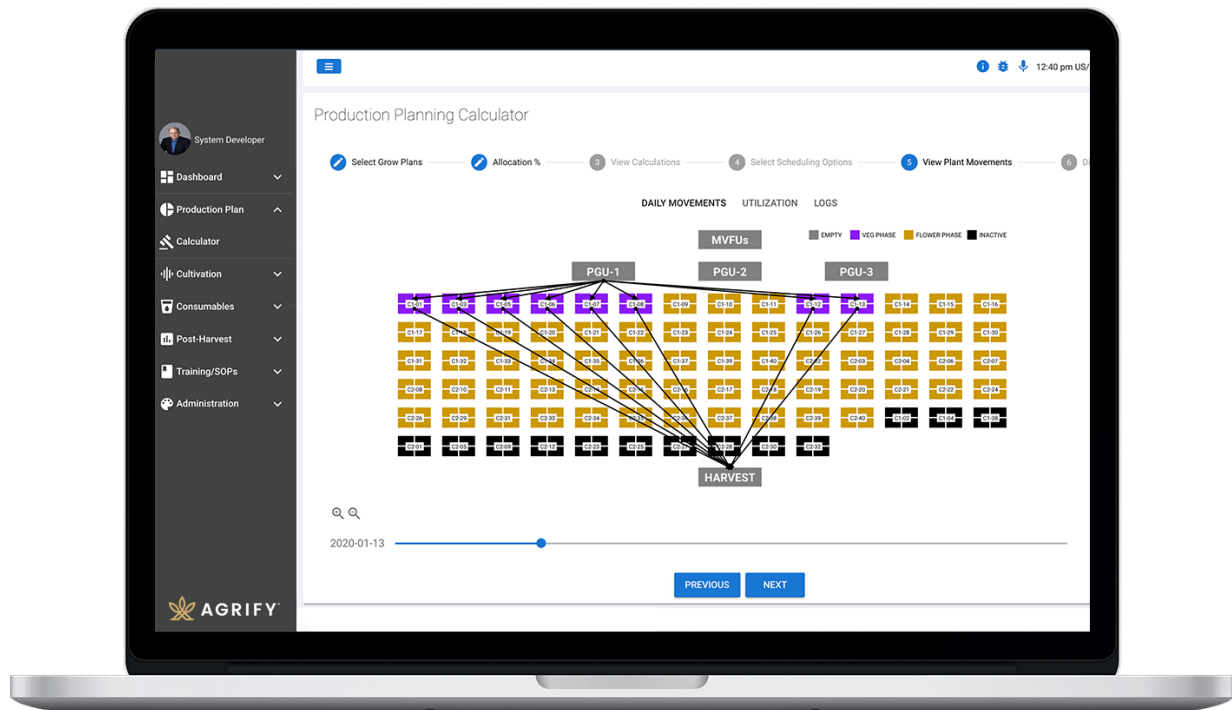


5 Software Features Every Grower Needs

1

PRODUCTION PLANNING TOOLS

Production planning tools create and manage just-in-time delivery schedules for every stage of the cultivation process to optimize operational efficiency and effectiveness. Solutions should include pre-allocating consumables inventory, utilizing the proper space for each cultivar and minimizing labor needed for plant-touching tasks. Integrated space planning features should organize by cultivar, for efficient rotation of plants transitioning between growth stages with minimal inactive space within the facility.



2

INDIVIDUAL ACCESS CONTROL AND AUDITING

Keep data protected by creating individual logins. Individual profiles and role-based security enables administrators to manage staff member's access. Adopt a system that creates an audit trail of user actions, allowing insight into skill gaps among staff.

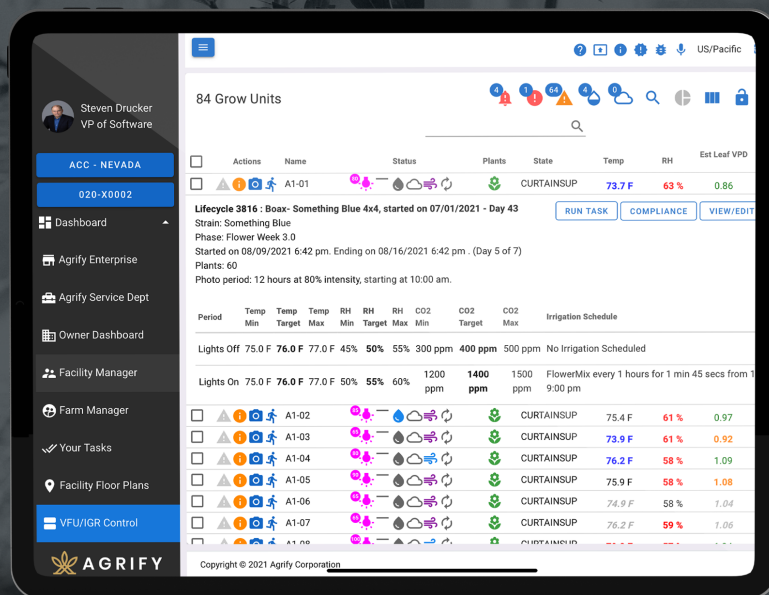
Role-based access also provides operators the ability to limit access appropriately and assign tasks to specific individuals. It also helps speed up task completion and reduces training time. Role identification also enables users to automatically assign tasks to only those personnel who are qualified to perform them.

3

AUTOMATED DATA COLLECTION

Good cultivation software will automatically store extensive data for each cultivar. Watering schedules, light intensity, fertilization schedules, temperature, CO₂ levels, humidity, soil moisture, EC (Electrical Conductivity) and pH (acidity or alkalinity) all play important roles in maximizing a strain's potential. Manually capturing and accurately recording this torrent of data in near real-time is simply not possible.

"Big Data" analysis is the key to spotting trends that are positively and negatively affecting yield, phyto-cannabinoid levels and terpene production. With the proper toolset, quickly identify and apply lessons learned to future harvests for each cultivar, achieving consistent outcomes and consumer experiences.



4

THIRD-PARTY COMPLIANCE INTEGRATION

Regulatory compliance tracking is a vital aspect of the cannabis industry. Most legal states now require cannabis tracking from seed-to-sale. By integrating with state compliant management tools, harvest weights and lab test results can be automatically downloaded and further analyzed for plant health optimization and streamlined data transfer without the risk of human error from manual entry.

5

AUTOMATED DEVICE CONTROL

Automated device control gives users a choice in selecting hardware for the facility that meets all needs while including a single integrated real-time dashboard for complete transparency of your physical plant operations. It'll also support you when you scale, allowing you to easily add new grow room space to your existing layout without interrupting any of your operations.

The Agrify Advantage

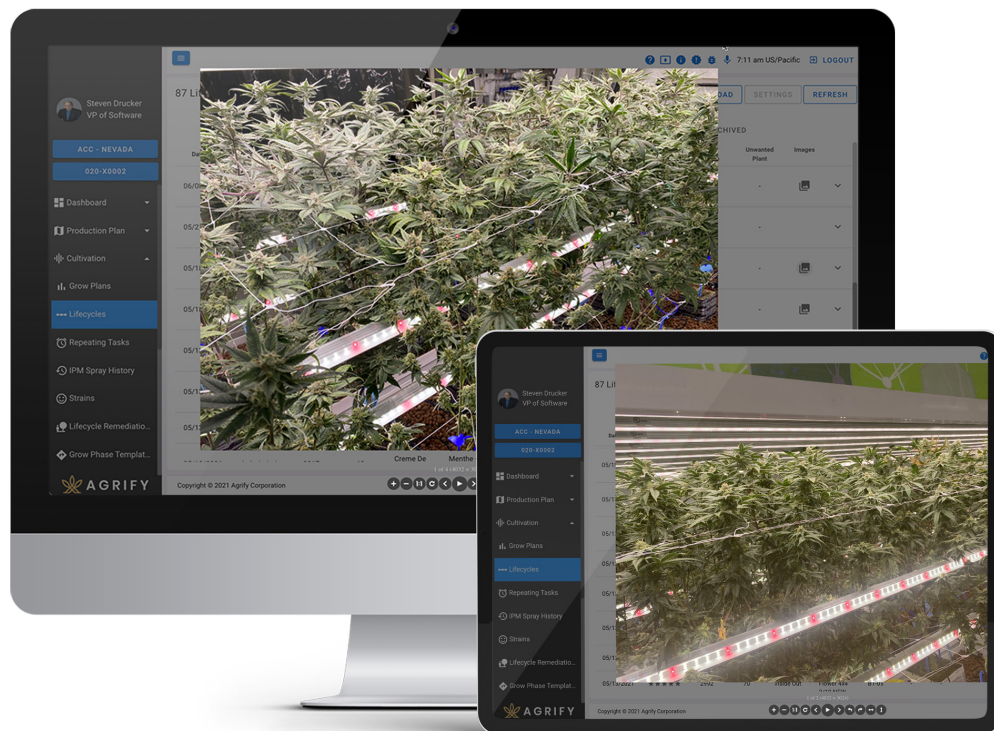
Agrify Insights™ software is a comprehensive, all-in-one solution for managing all aspects of a cannabis facility from full environmental control to production planning to compliance integration. With unparalleled automated device control, Agrify Insights allows growers, owners, and operators to manage and monitor the critical variables that impact the success of their cultivation.

Agrify insights was built to harness the power of the world's most technologically advanced grow system: Agrify's VFU (Vertical Farming Units). Its integration enables users to collect up to 1.5 million data points annually per VFU, and along with integrated analysis tools, allows for adjusting and optimizing the grow environment to maximize the yield and consistency of crops.



Agrify Insights helps teams stay in compliance by seamlessly integrating with METRC and Confident Cannabis. By linking lab test results with environmental data, Agrify Insights identifies ideal environmental conditions and creates the perfect “recipe” for consistent outcomes for each unique cultivar.

Bring world-class planning tools to any facility operation with Agrify Insights. Its OPEX calculator accounts for all major factors that could affect the bottom line, while integrated production planning tools help increase facility usage rate by up to 98%+. Both tools can be used in planning mode, allowing for growers to have full transparency into projected outcomes before it's too late.



Our customer service is unsurpassed with support available 24/7, customizable standard operating procedures loaded directly onto the platform, a trouble-ticketing system and onboarding programs at Agrify University, we are always available to our customers.

Agrify's cultivation solutions focus on the future of growth, preparing operations to be competitive, nimble, and successful in the rapidly evolving cannabis industry. Customers' challenges are met head-on by rapidly adding and improving on innovative features with data-driven paths to maximize, standardize, and optimize each harvest.

Get started today.

Contact Agrify to learn more about how to make Agrify Insights an integral part of your cultivation facility.

